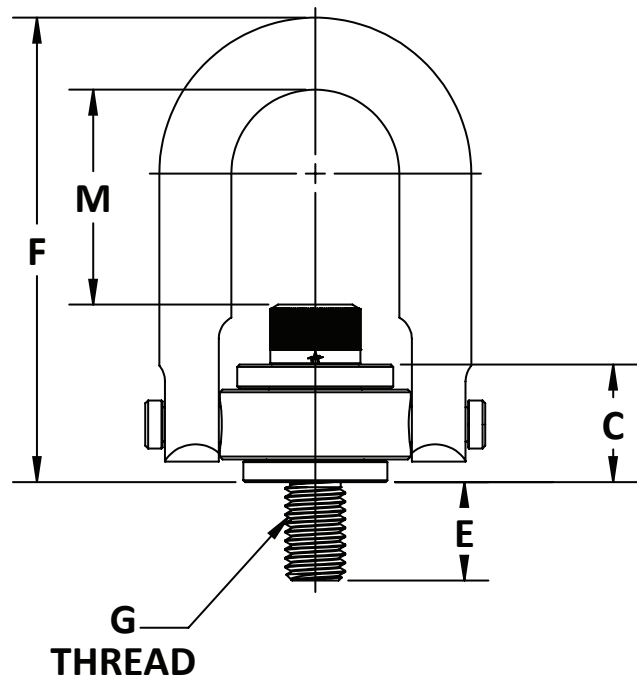


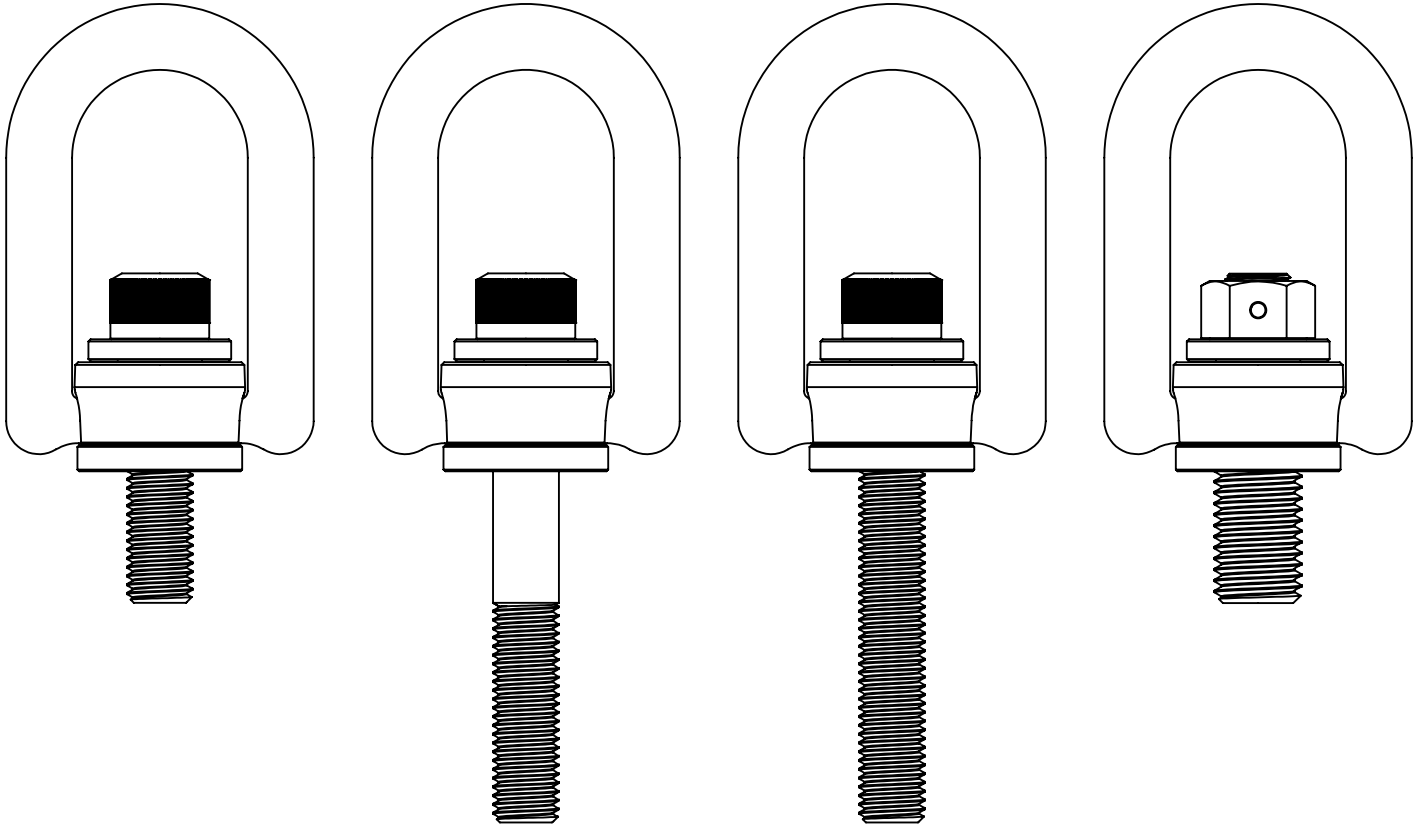
**Heavy Duty Hoist Ring**



**Safety Engineered Hoist Ring**

### Specialized Hoist Rings

- In general, the Heavy Duty hoist rings and Safety Engineered (EZ-Torque & Stainless Steel included) hoist rings are both customizable.
- The dimensions that are commonly altered are **E** and **G**.
- The **E** dimension is referred to as the **thread projection**. DO NOT confuse this with **threaded length**.
- **Threaded length** is the amount of bolt that is threaded. With longer **E** dimensions, the bolt may be only threaded a portion of the length. This would leave some of the bolt as a solid shank and would not thread completely into the mating material.
- In most cases, leaving a portion of the bolt unthreaded is not an issue because the hoist ring is being used in a tough hole application. A **nut and washer** can be used on the bottom side to secure the load.
- Longer than standard **E** dimensions may or may not be **fully threaded** already, but this will have to be determined by the ADB estimating team.
- If the bolt must be **fully threaded**, it must be specified. **Fully threaded** bolts are significantly more expensive than non-fully threaded bolts. This option's cost is extremely quantity dependent.
- Shorter than standard **E** dimensions are possible, but the customer must include information about the mating material's tensile strength.
- The **G** dimension is the **thread callout**. If needed, ADB can customize the **thread diameter** and **thread pitch**. **Thread diameter** changes are typically accomplished by use a **stud and nut** design.
- On the Safety Engineered hoist rings, the **F** or **M** dimensions can be customized. This option affects both dimensions equally. There is high cost associated with this modification and is extremely quantity dependent.
- Other options for special hoist rings include: **proof load testing**, **NDT testing**, **corrosion resistant plating**.



A) Base Part

B) Long Thread Projection

C) Long Thread Projection & Fully Threaded

D) Stud & Nut with Larger Thread Diameter

Part number format: X33716-3/4-10 X 4 TP - FULLY THREADED

(1)
(2)
(3)
(4)

**(1)** - Base hoist ring part number. If specifying a longer or shorter longer E dimension, use the next longest or longest available standard hoist ring from the ADB product listing.

**(2)** - Thread callout. Must be included with any E or G dimension changes. Format must be altered to as the following.

Inch thread: 1 1/2"-6 ---> 1 1/2-6

Metric Thread: M42X4.5 ---> M42-4.5

**(3)** - Thread Projection. Must be included with any E or G dimension changes. Format as below.

Inch thread: E = 2.75" ---> 2.75 TP

Metric thread: E = 75mm ---> 75MM TP

**(4)** - Additional modifications. Example options possible are below.

Fully threaded E dimension: - FULLY THREADED

2" partially threaded E dimension: - 2 IN THREADED

150% load test for 10 minutes: - 150LT-10MINS

Yellow zinc plating: - YELLOW ZINC

F dimension equals 10": - F=10

Include nut and washer: - NUT-WASHER